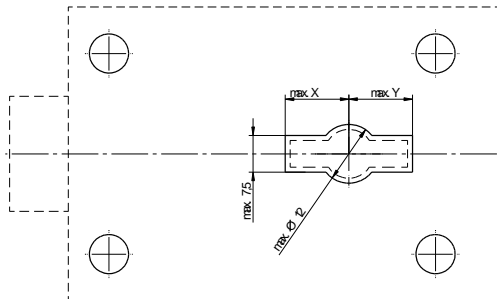




- In cases where the Kaba Mauer key guide or key carrier guide are not used, the maximum cross sectional area of the keyhole in the door of the secure storage unit and/or the lock armour plating may not exceed the dimensions given in Fig. 3 considering DIN 2768-mH. All dimensions deviating from these specifications are to be coordinated separately with the certification bodies (test houses).



Centurio A Centurio A Plus	X (mm)	Y (mm)
74041 74046	13.5	13.5

Fig. 3: Max. cross sectional area of keyhole

## 4. Lock Mounting

- For installation and adjustment of the lock on the door, make sure that the key can be inserted into the lock without having to apply force and without jamming. This can be achieved by mounting the lock according to the following pattern of mounting holes (Fig. 4). For further lock dimensions please refer to the Kaba Mauer Catalogue Sheet. Mounting plate (Option Code MPL) may be used as an alternative.

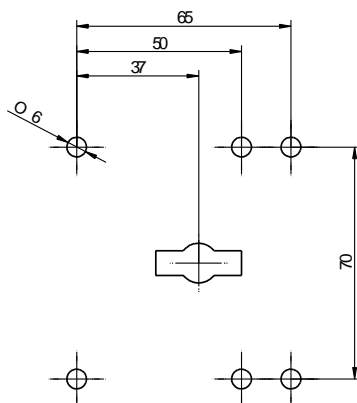


Fig. 4: Fastening hole pattern

## 5. Technical Data

- Lift height of bolt 12 mm
- Bolt in fully extended position: approx. 28 mm
- Bolt width: 35 mm; Bolt height: 2,5 mm
- The maximum allowable force acting on the key bolt against the blocking direction, the maximum locking force and the lateral load acting on the bolt, correspond to 1 kN and should not exceed this value. Provision should be made design wise for bolt stoppers on both ends or for a bolt support.
- The actuating turning moment on the key may not exceed 2.5 Nm
- The bolt was according to EN1300 with a permanent load of 2,5 N over 10.000 cycles tested. These load should not be exceeded permanently.
- Mounting plate (Option Code BPL) – reinforced by manganese steel – is available at option as a protection against opening by boring.
- Optional fixing angles screwed or riveted via the holes in the bolt (Option Code WXX XXX)

